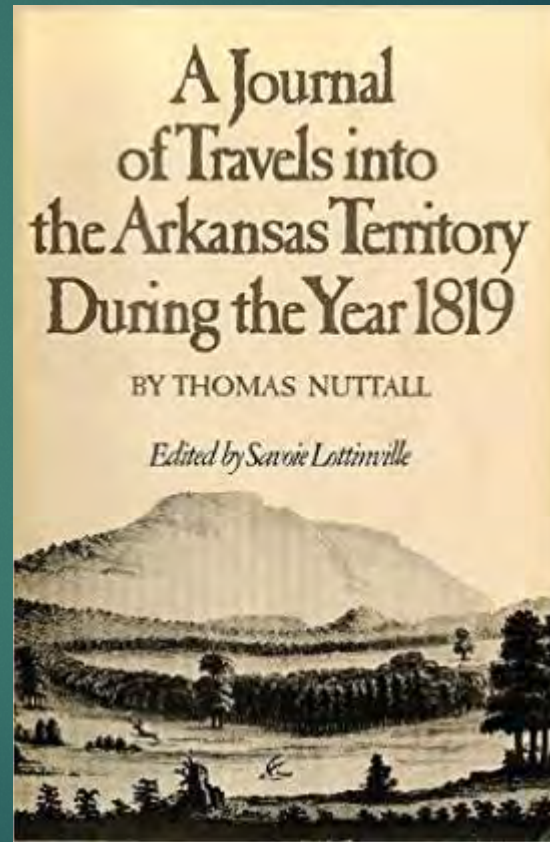


Oxbows, Salt Springs, and Cane: Eastern Oklahoma in the Journals of Thomas Nuttall

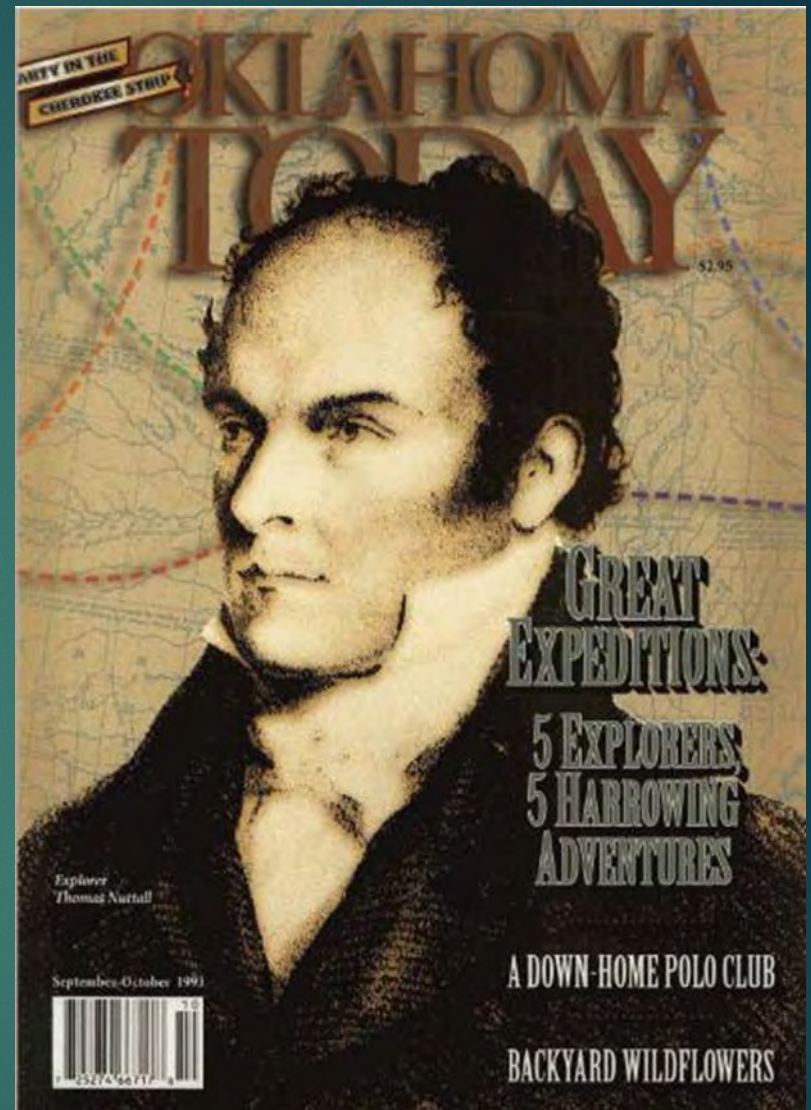


Steven Patterson, OCLWA 2018, Stillwater, OK, April 5, 2018

--Introduce
Thomas Nuttall
and
the upcoming
bicentennial of
his trip to Oklahoma

--A taste of aquatic
eastern Oklahoma
in 1819, including

- Cane
- Oxbows
- Salt springs



Thomas Nuttall

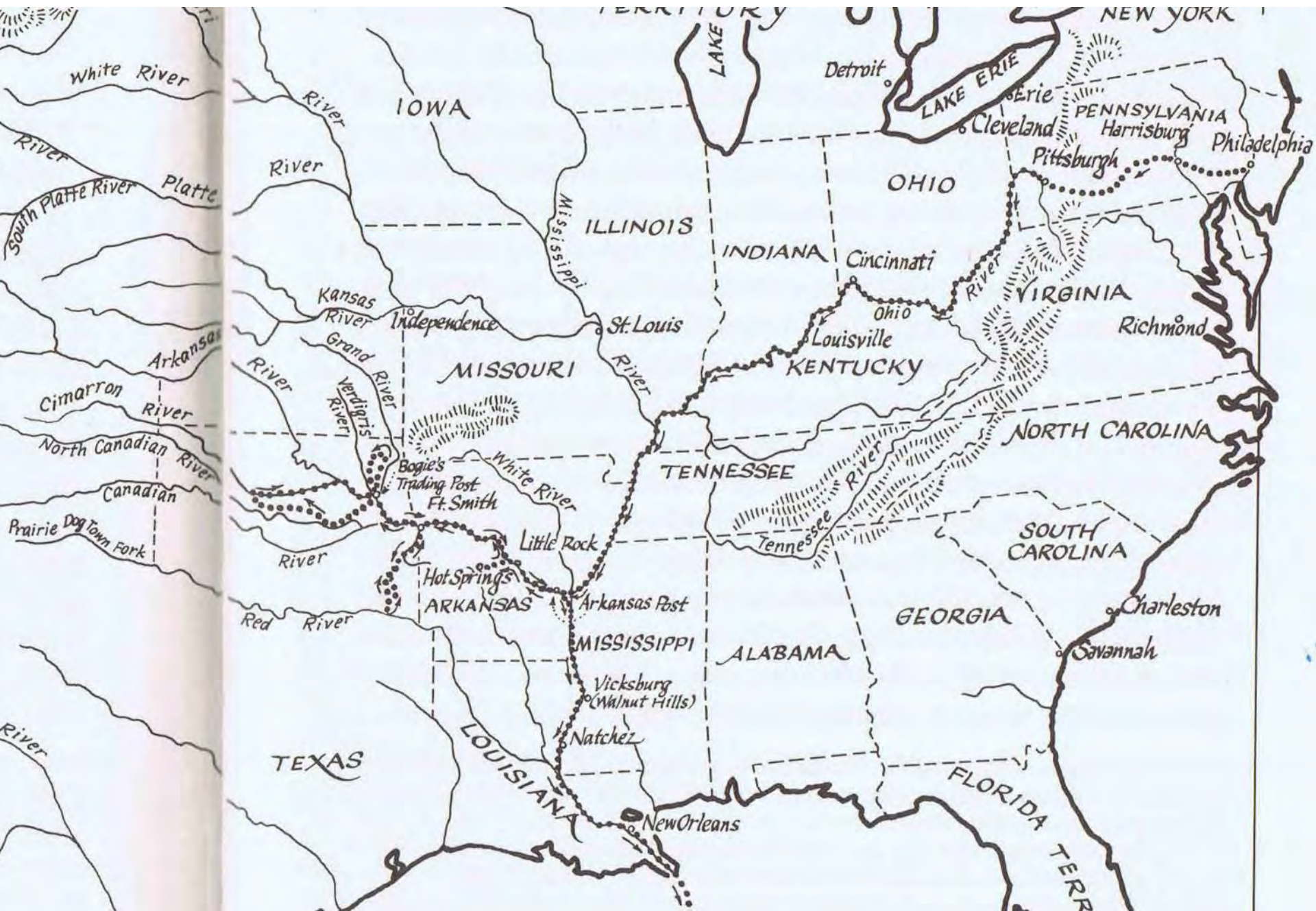
1786 – 1859



J.J. Audubon print:
band-tailed pigeon on
Cornus nuttalli

Who was Nuttall?

- The first botanist (in the European scientific tradition) to visit & record Oklahoma flora
- An explorer of North American frontiers whose *“botanical perception and expertise were unmatched by any other American taxonomist of the nineteenth century...”*
- (Robert Dorn 1977)





1803 Louisiana Purchase

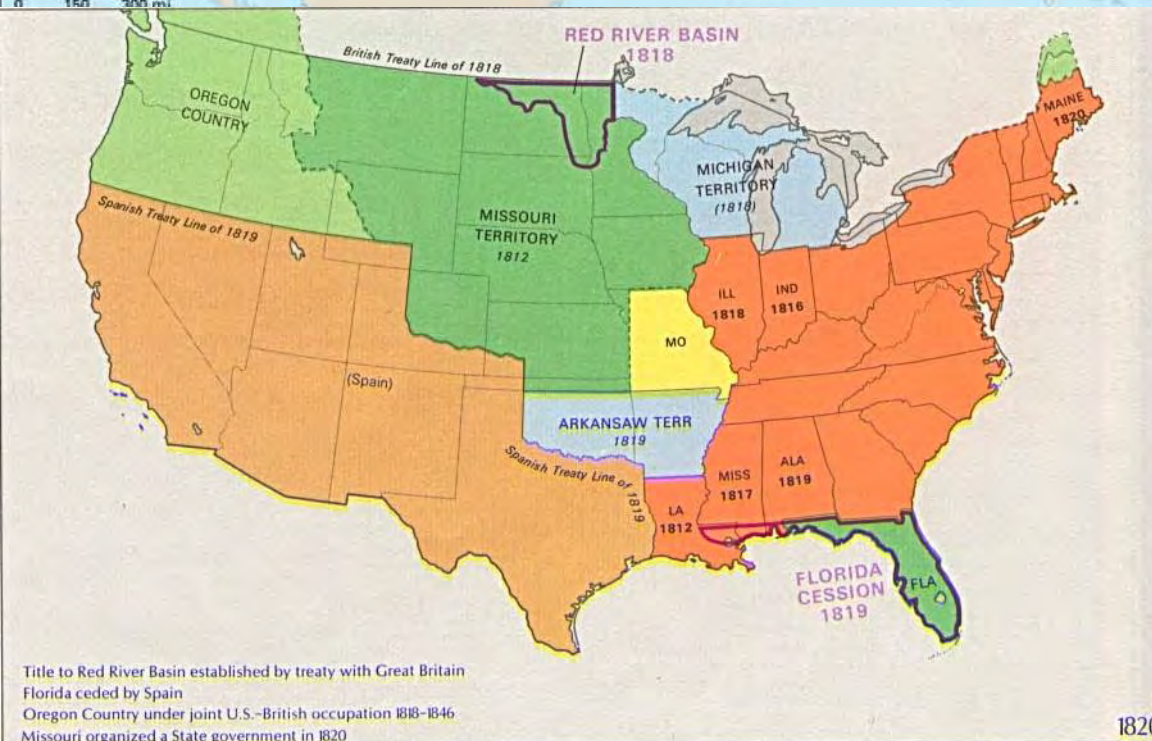
1804 - 1806 Lewis & Clark

1817 Battle of Claremore Mound

Dec. 25, 1817 Fort Smith established

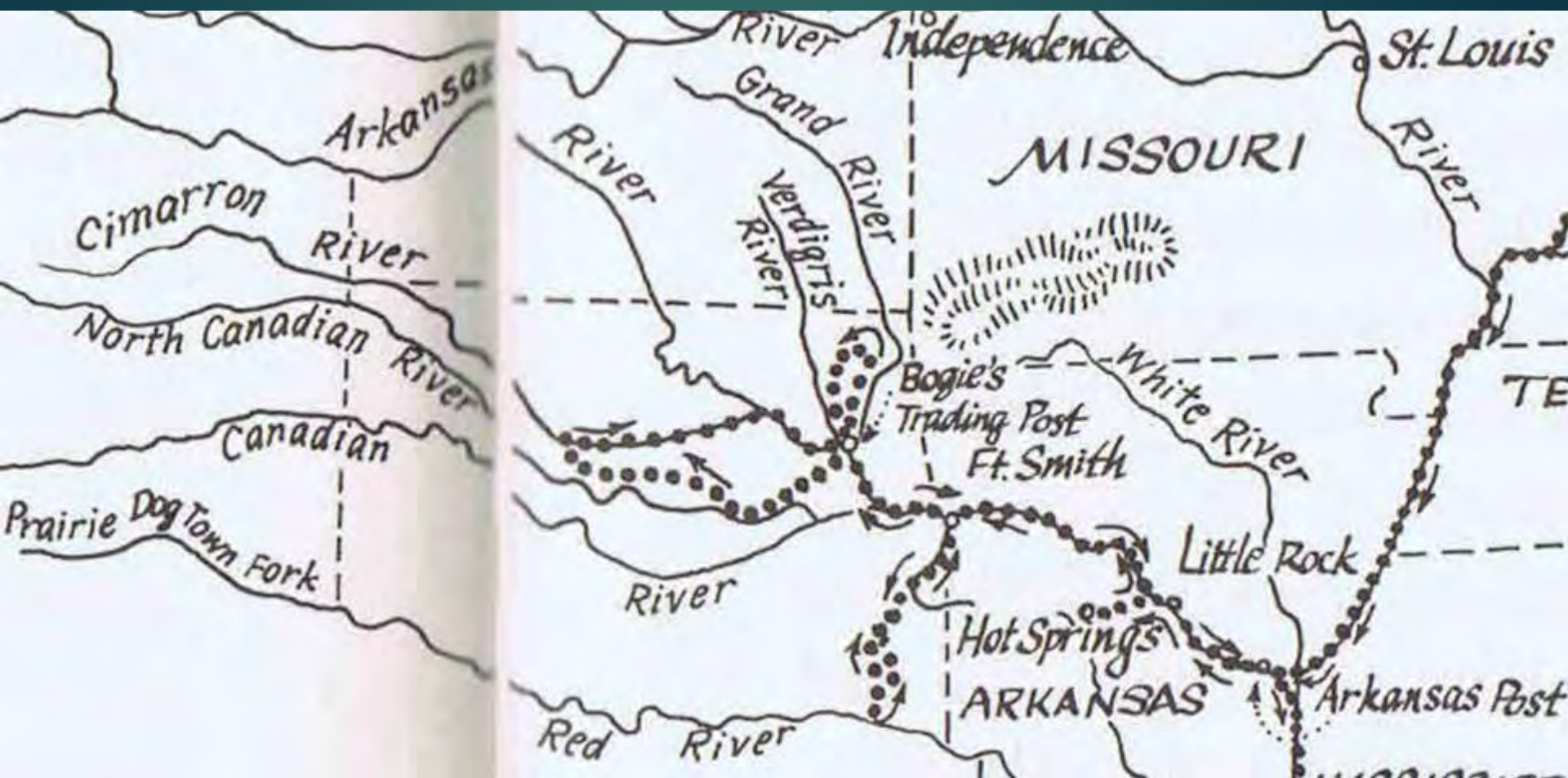
1807 Von Humboldt –
“Essay on the Geography
of Plants”

No evolution yet - 1859





“Prairies and mountains of the Pottoe...”





Okay

Fort Gibson



**The Falls at
Webbers Falls**



Cane



 Cherokee Nation River Cane Initiative

Cherokee Nation
River Cane Initiative

 Public Group

About

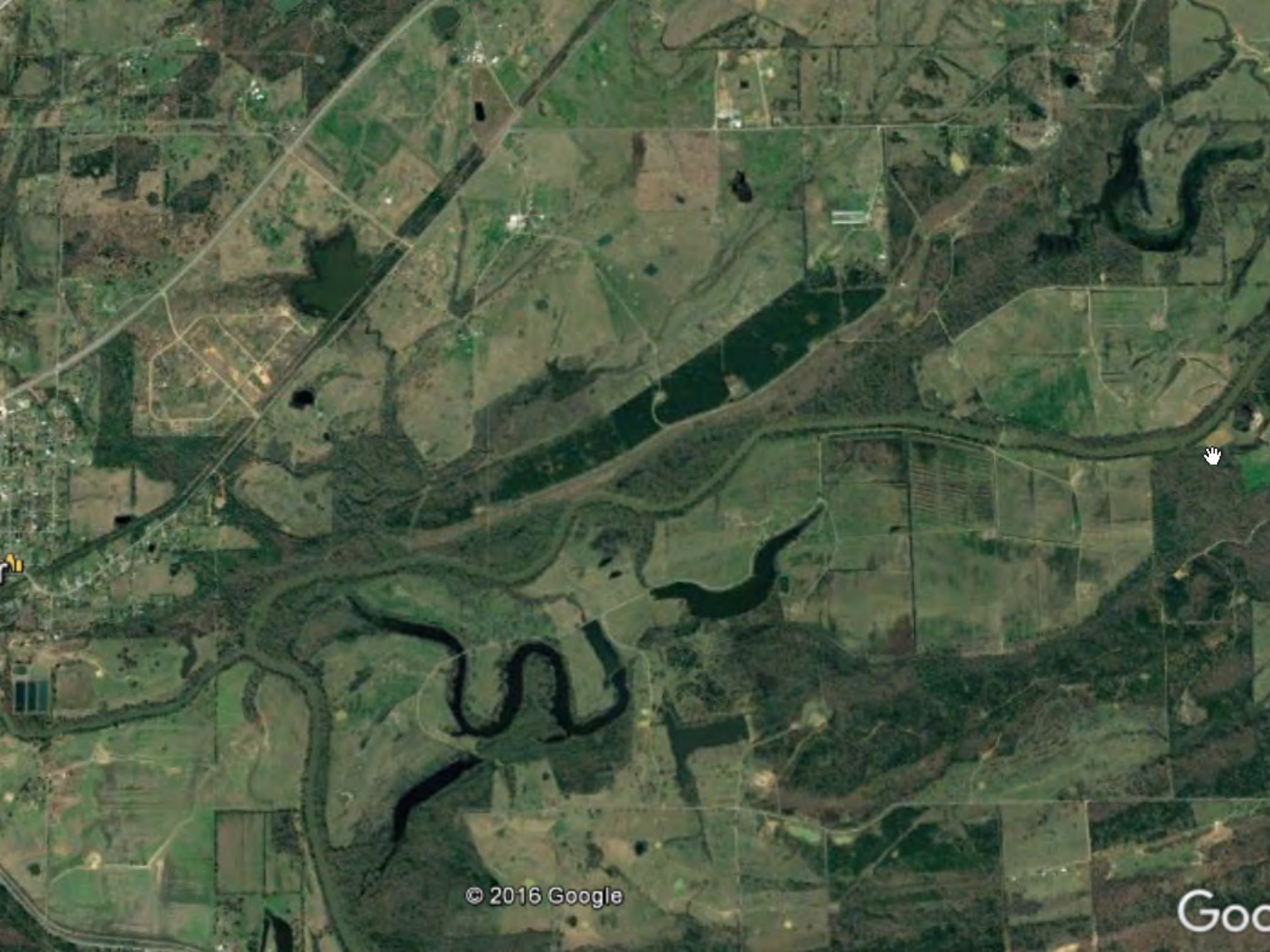
Discussion

Members



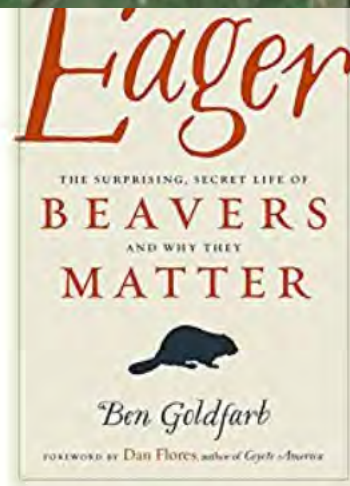
Oxbows





© 2016 Google

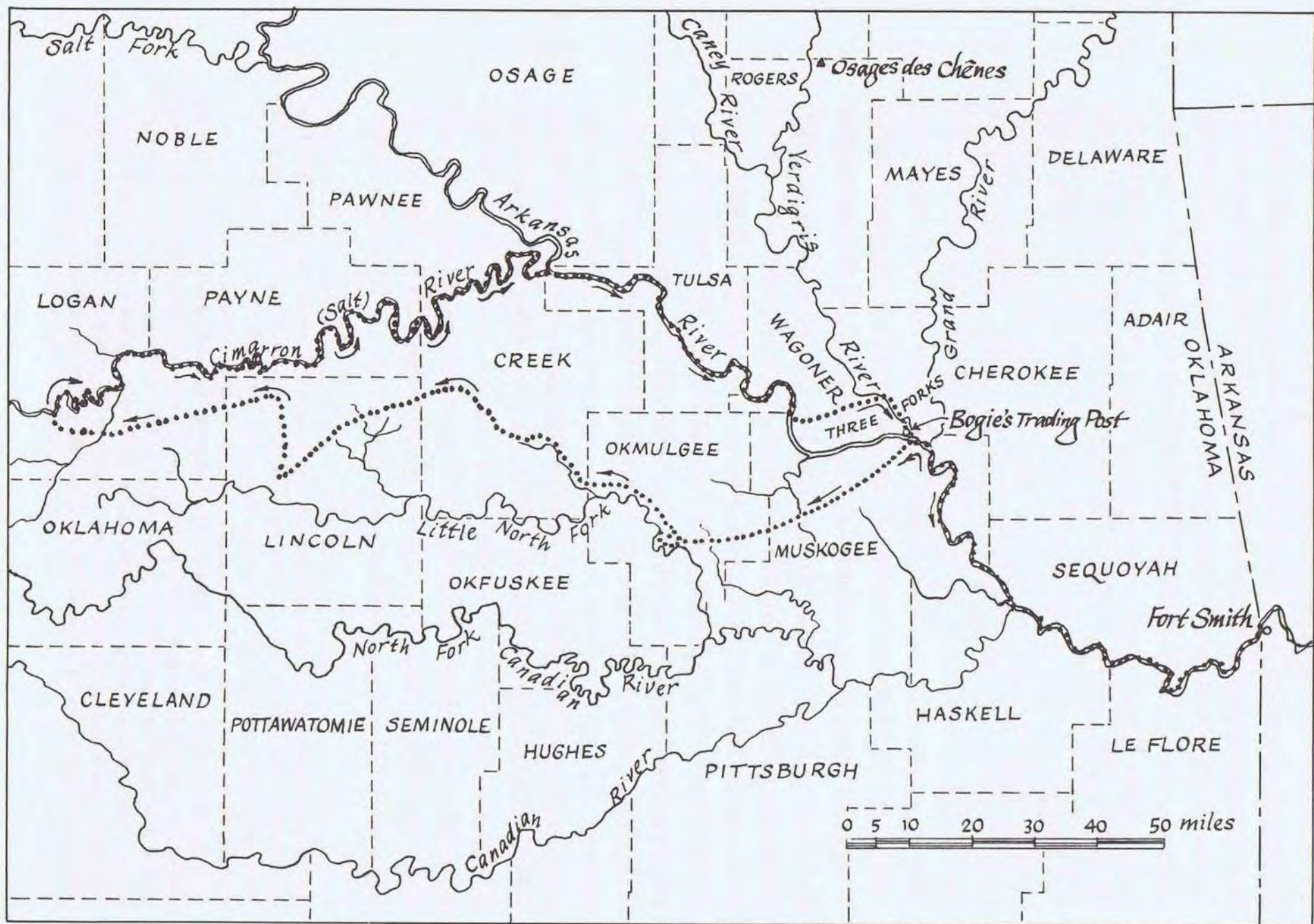
Go



Eager: The Surprising, Secret Life of Beavers and Why They Matter

In Eager, environmental journalist Ben Goldfarb reveals that our modern idea of what a healthy landscape looks like and how it functions is wrong, ...

[amazon.com](https://www.amazon.com)





Source: Wikipedia

Salt

Salt Branch
Creek

S 4470 LP







THIS SALT KETTLE WAS ONE OF MORE THAN 100
FORMING PART OF THE EQUIPMENT OF MACKEY'S
SALT WORKS ON THE ILLINOIS RIVER INDIAN TERR
ITORY AN IMPORTANT STATION ON THE MILITARY
ROAD TO ITS WITH ARKANSAS FOR MANY YEARS
BEFORE THE CIVIL WAR SALT WAS MADE THERE FOR
THE INDIAN POPULATION AND UNTIL 1864 THE FED
ERAL GOVERNMENT USED THE PLANT TO SUPPLY SALT TO
THE ARMY AND REFUGES IN THAT YEAR ON THE
BATTLE OF CAPTURE BY THE CONFEDERATES THE FED
ERAL SOLDIERS BURNED THE ESTABLISHMENT AND
DESTROYED THE KETTLES AFTER THE WAR IMPOVE
RISHED THEM KETTLES PATCHED AND AGAIN USED
THE KETTLES FOR A FEW YEARS
PRESENTED BY HON. GRANT FOREMAN DITT.

Bacone College

A Journal of Travels into the Arkansas Territory During the Year 1819

BY THOMAS NUTTALL

Edited by Savoie Lottinville



Thomas Nuttall Bicentennial

Thomas Nuttall Bicentennial

Public Group

About

Discussion



Thomas Nuttall Excursion 2.0

In 1819, Thomas Nuttall, a field botanist and naturalist from Yorkshire, England, traversed the Poteau River Valley, identifying many indigenous plants and wildlife and recording what he saw in a journal. As we approach the 200th anniversary of his trip, join us in this workshop where we will trace his steps from Ft. Smith, where the Poteau River enters the Arkansas River, to near Lake Wister, where Nuttall camped one night. Along the way we will view plants, wildlife, and landscapes that he described and which demonstrate the first written evidence of what the area looked like when Ft. Smith was only 16 months old. The day will begin with a brief introductory presentation; most of the day will be spent in the field. A box lunch and bus transportation will be provided.

Even if you joined us last year, come back again as we will include new stops and continue to explore the ecology and history of this beautiful region!



*This sketch of Cavalon Hill was made by
Thomas Nuttall in 1819.*

To learn more about Thomas Nuttall's journey, check out the [Facebook group: Thomas Nuttall Bicentennial](#). Also if you would like to read Nuttall's journal before the class, we suggest the edition edited by Savoie Lottinville and published by the University of Oklahoma Press as "A Journal of Travels into the Arkansas Territory in the Year 1819."

View the landscape of eastern Oklahoma and western Arkansas through the lens of the journal of the first scientist to visit the area. Whether your interests are natural history, human history, or simply exploring, this trip will help you see this region with new eyes.

DATE: Saturday, April 28, 2018

COST: \$50

TIME: 9 am to 5 pm

INSTRUCTOR: Steve Patterson, Ph.D.

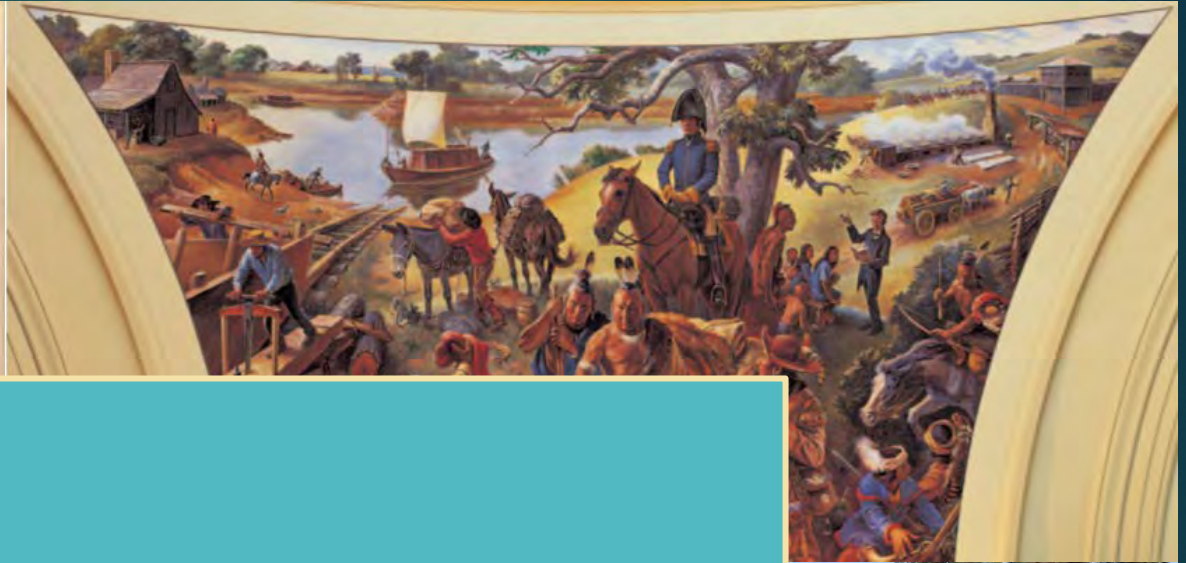
Register online at bis.ktc.edu

For more information, contact Nina Morgan, (918) 647-5418, nmmorgan@ktc.edu
or Danielle Mathews, (918) 647-3439, dmathews@ktc.edu

A Journal of Travels into the Arkansas Territory During the Year 1819

BY THOMAS NUTTALL

Edited by Savio Lottin



Questions?

